



PUBLIC MEETING

March 4, 2021

REDEVELOPMENT of

HISTORIC MELROSE HIGH SCHOOL

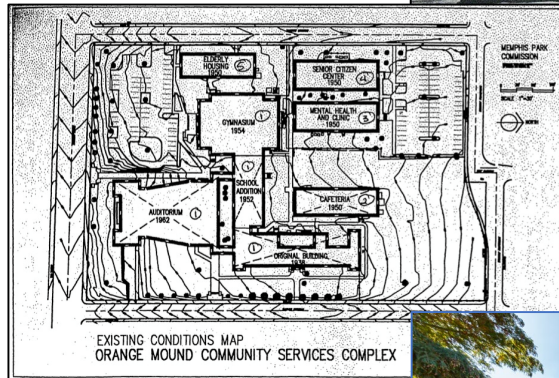
843 DALLAS STREET



THE JOURNEY



Melrose High School, 1938
(Memphis Press-Scimitar, April 29, 1938))



FIRST SCHOOL:

Cir. 1890 (Spottswood Avenue)
Named after the surrounding community

ROSENWALD SCHOOL:

Cir. 1914 - 2nd Melrose
The little yellow school

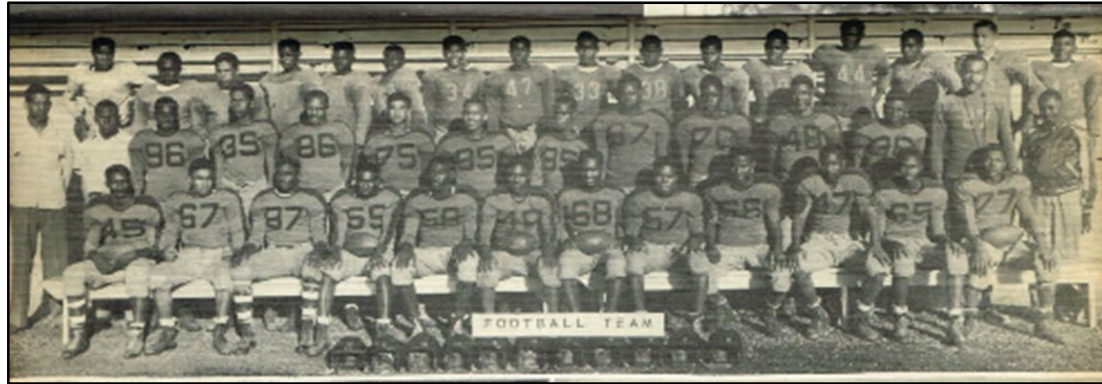
1938:

3rd succession of Melrose School
Three story; 40,000 sq. Ft.
Campus additions - 1950's
Grades: 1st - 12th

CLOSURE:

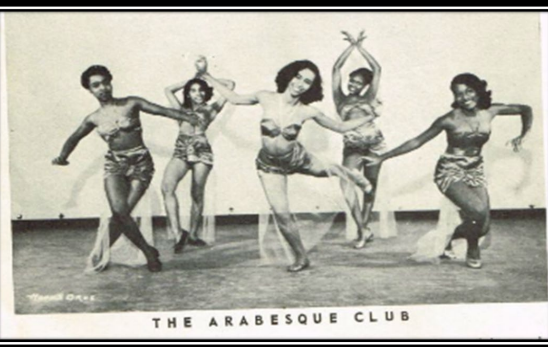
1981 – Building closed
2001 – National Registry
2018 – City of Memphis Reactivation

THE GLORY YEARS



Community School
Heartbeat of the Neighborhood
1st -12th Grades
More than just a school
Seat of Learning
Citadel of Accomplishments

LETTERMEN'S CLUB

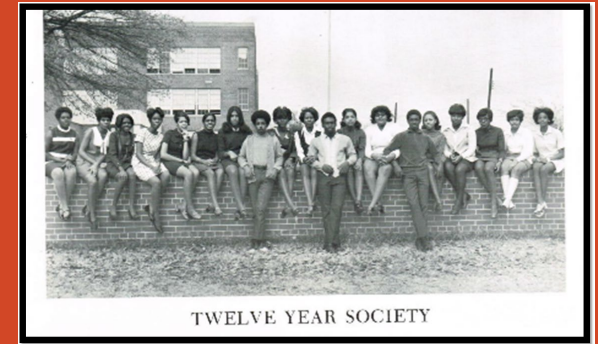


THE ARABESQUE CLUB

BOXING TEAM

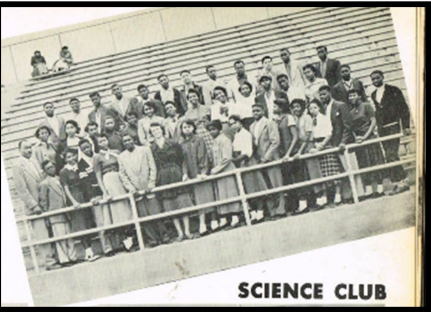


Left to right: Bottom row, Ditz, Hackett, Dean, and Hughey.
Top row: Tate, Mitchell, Bridges, Harris, Webb and Timberlake.

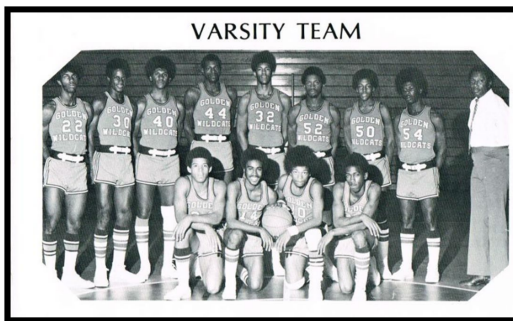


TWELVE YEAR SOCIETY

SCIENCE CLUB



VARSITY TEAM



Melrose Golden Wildcat Marching Band



CORONATION BALL



Source: Melrose Yearbooks

THE DECLINE



1972 – Grades 10-12 moved
Elementary grades moved
Students bused to other schools.

Decline in enrollment

40 years – Vacant

Fight to save the school



HOW WE GOT HERE

**Fight to Save Historic Melrose
Fairgrounds Redevelopment (2017)**

**Temporary Reactivation (2018)
Private Development Opportunity (2019)**

**Community Informed (2019/20)
Back to the Drawing Board (2020)**

**Accelerate Memphis (2021)
\$10M Investment**

THE FUTURE

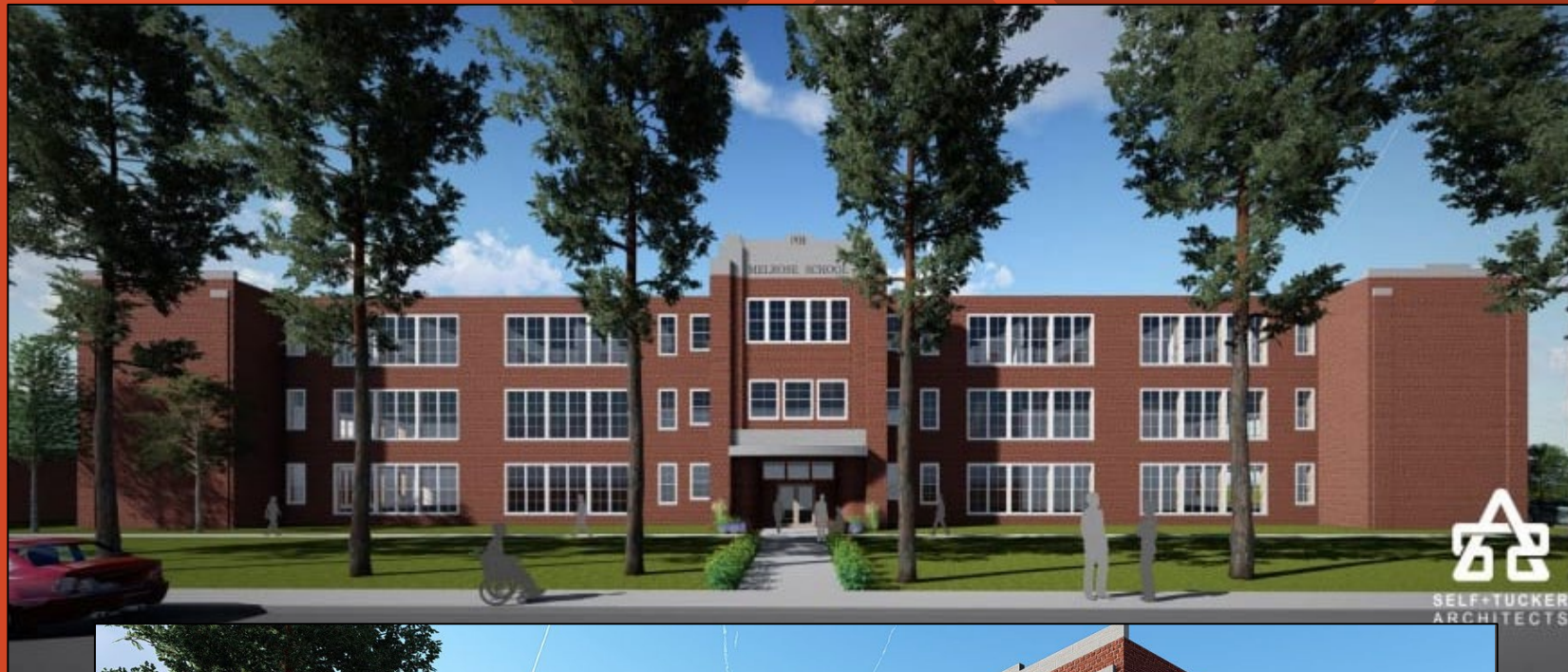
National Model

State of the Art

Repurposed Historic
Building

Multi-Use

Public Private Partnership



THE PLAN: PROGRAMMING



African American
Genealogy Center

Multi-Generational Programs

Youth Programs – The Arts

Cultural Research Center

Library

Neighborhood Nonprofits

Video/Audio Recording

Community Conversations

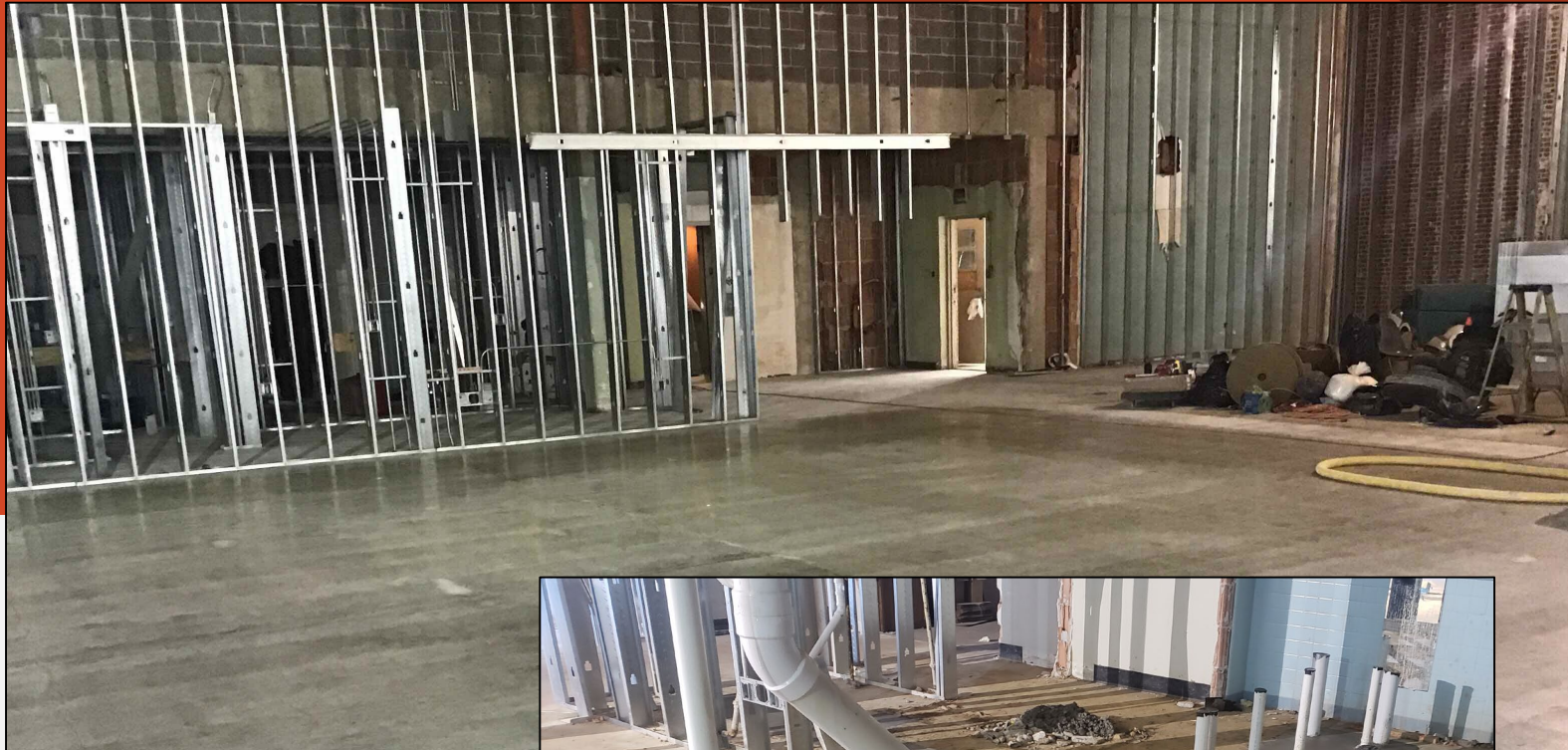
Oral History Collections

GENEALOGY CENTER



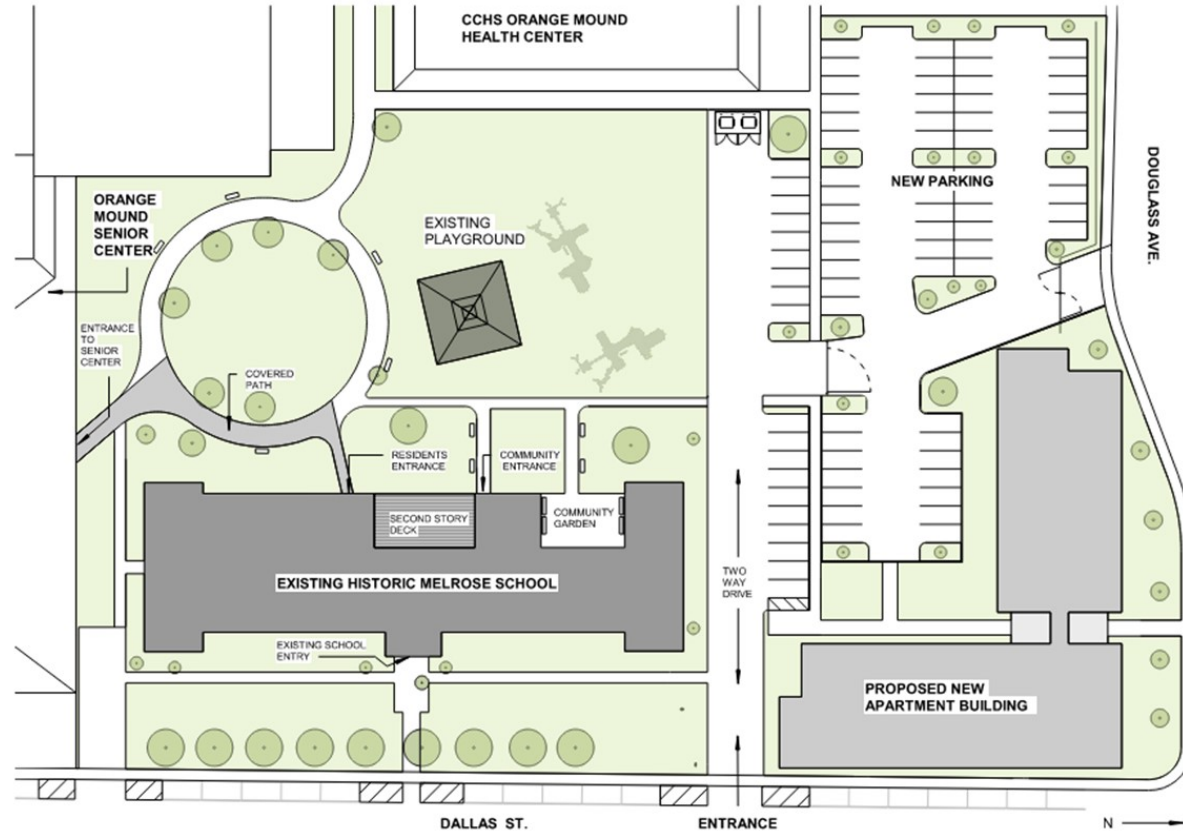
- Preservation
- Family Research
- Archives (Photos, Artifacts, Digitalization)
- Orange Mound Neighborhood
- National Model
- Resource Center
- Culture, Heritage & History
- Consultations offering assistance with researching your history
- Art Exhibits
- Technology
- Creative Arts (Storytelling, Spoken Word, Documentaries & more.

TIMELINE - DEVELOPMENT



- 6-8 Month Design Period
- Groundbreaking Late 2021 / Early 2022
- 18 Month Construction Period
- Goal: Genealogy Center & Library open by end of 2023

THE PLAN: CONSTRUCTION

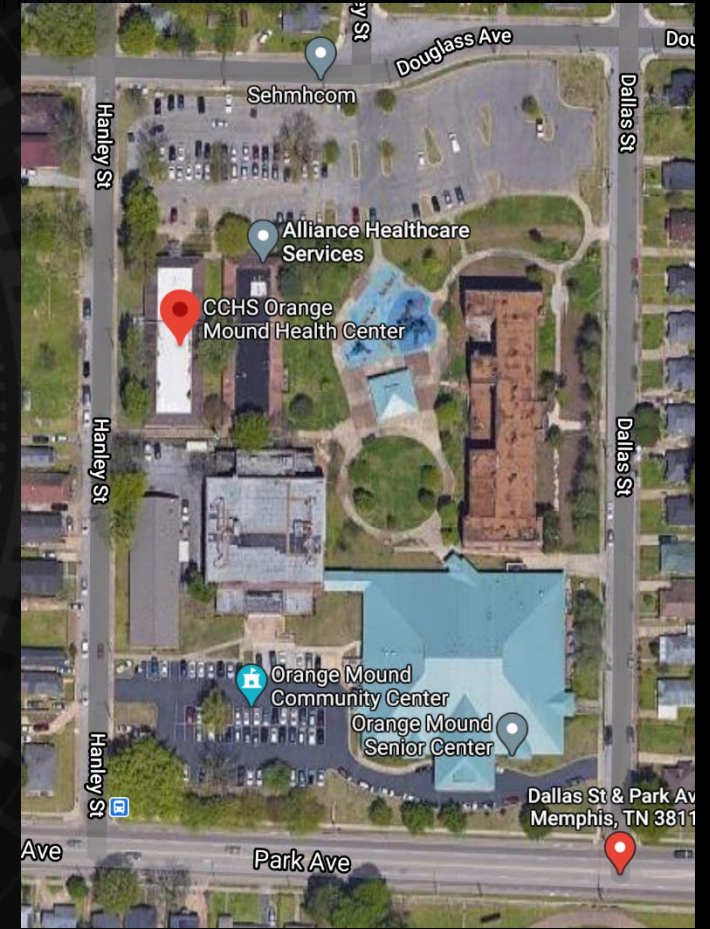


ARCHITECTURAL SITE PLAN

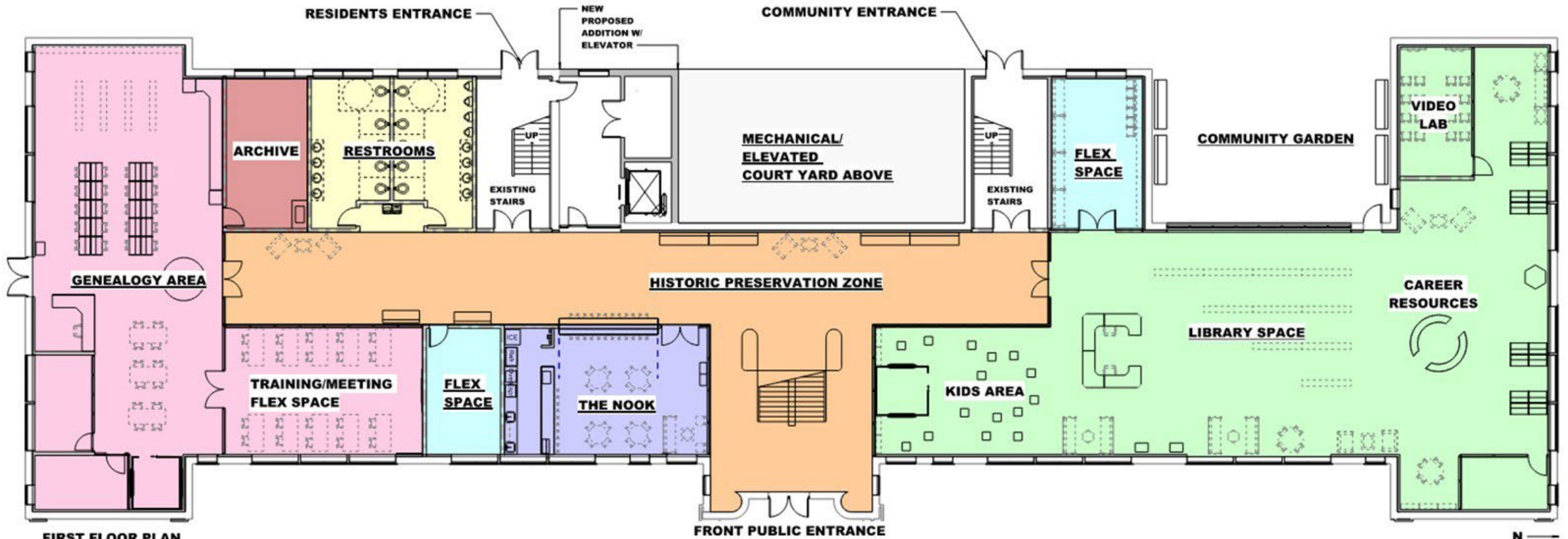
1" = 50'-0"



Historic Melrose School Renovation
View: Architectural Site Plan











THE PLAN: CONSTRUCTION



FIRST FLOOR PLAN

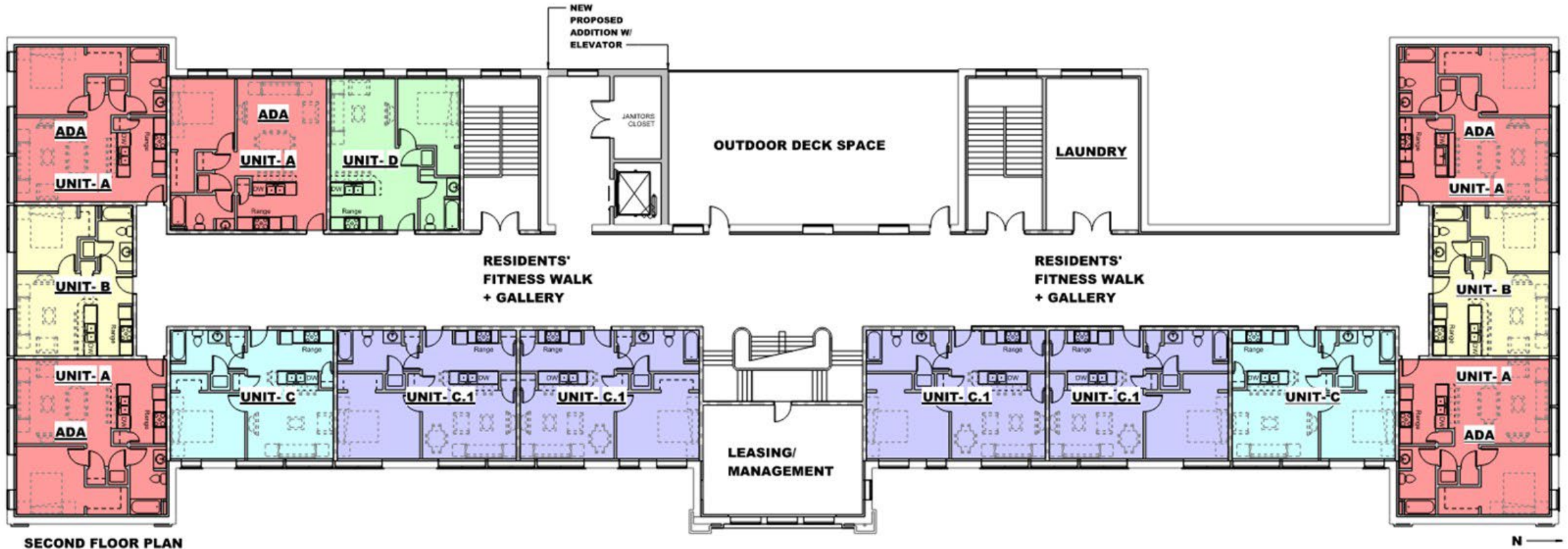
SCALE: 1/8" = 1'-0"

| SPACES | |
|-------------------------|---|
| GENEALOGY AREA |  |
| TEMP CONTROLLED ARCHIVE |  |
| RESTROOMS |  |
| FLEX SPACE |  |
| REFRESHMENT NOOK/PARLOR |  |
| MECHANICAL |  |
| LIBRARY |  |
| HISTORIC CORRIDOR |  |

Historic Melrose School Renovation View: First Floor Plan



THE PLAN: CONSTRUCTION



SECOND FLOOR PLAN

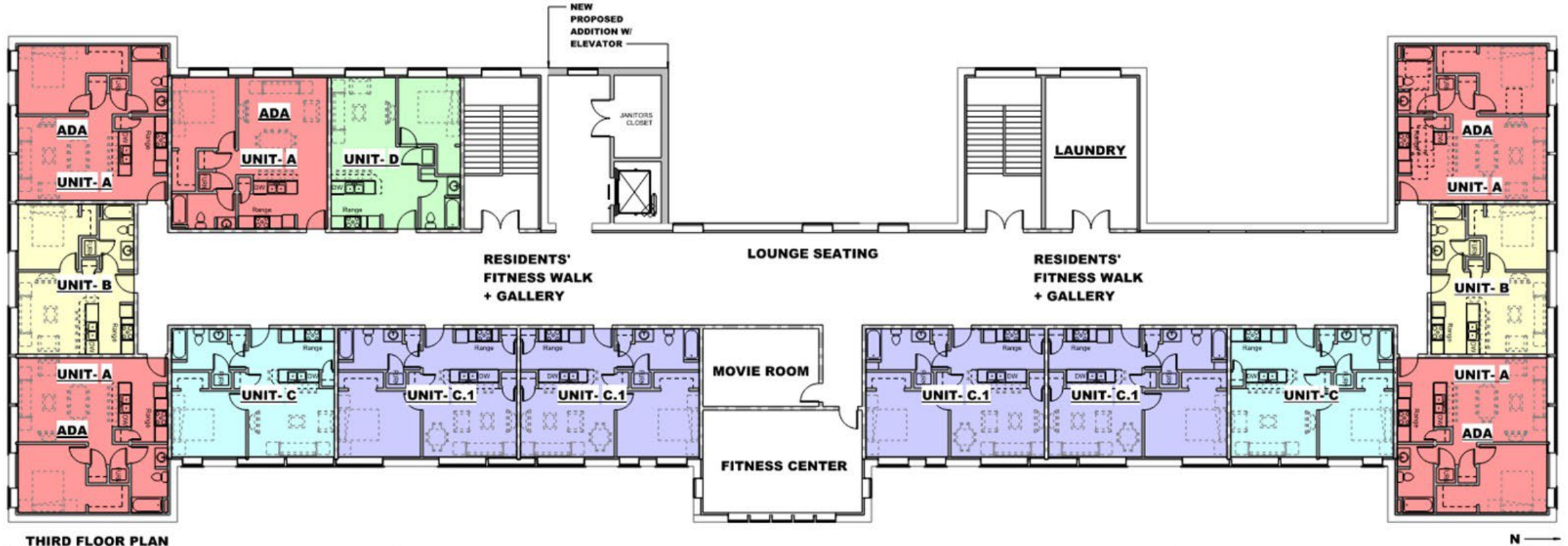
SCALE: 1/8" = 1'-0"

| UNIT TYPES | |
|-------------------------|---------------------------------------|
| A - 5 UNITS (ADA) | ■ |
| B - 2 UNITS | ■ |
| C - 2 UNITS | ■ |
| C.1 - 4 UNITS (Bigger) | ■ |
| D - 1 UNIT | ■ |
| TOTAL UNITS = 14 | |

Historic Melrose School Renovation View: Second Floor Plan



THE PLAN: CONSTRUCTION



Historic Melrose School Renovation
View: Third Floor Plan

| UNIT TYPES | |
|------------------------|--|
| A - 5 UNITS (ADA) | |
| B - 2 UNITS | |
| C - 2 UNITS | |
| C.1 - 4 UNITS (Bigger) | |
| D - 1 UNIT | |
| TOTAL UNITS = 14 | |



Historic Melrose School Renovation
View: Looking at The Nook and Genealogy Center



Historic Melrose School Renovation
View: Looking at Genealogy Center Portion 1



Historic Melrose School Renovation
View: Looking at Genealogy Center Portion 2



Historic Melrose School Renovation
View: Looking at The Library



SELF+TUCKER
ARCHITECTS

Historic Melrose School Renovation
View: ADA Unit



Historic Melrose School Renovation
View: 2nd Floor Deck



SELF+TUCKER
ARCHITECTS

Historic Melrose School Renovation
View: 2nd Floor Corridor

Questions/Answers Period

FOR MORE INFORMATION CONTACT

Ashley Cash, Director

ashley.cash@memphistn.gov

